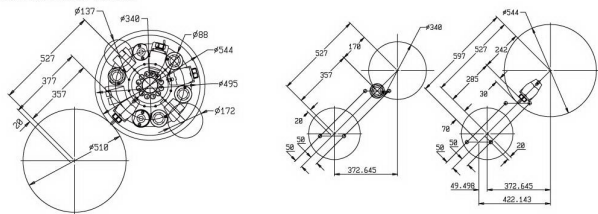


刀塔有效工作範圍 TURRET WORKING CAPACITY / RANGE

單位UNIT: mm

EFL-510Y-VDI 40 / 8 EFL-510Y-VDI 40 / 8 Y axis

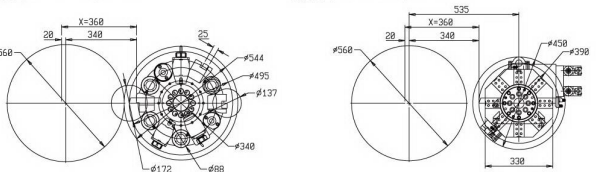
刀具規格 Tool specification: □25 x 25 mm  
孔內刀座 I.D. tool holder: Ø50 mm



EFL-560-VDI 40 / 8 EFL-560-V8

刀具規格 Tool specification: □25 x 25 mm  
孔內刀座 I.D. tool holder: Ø50 mm

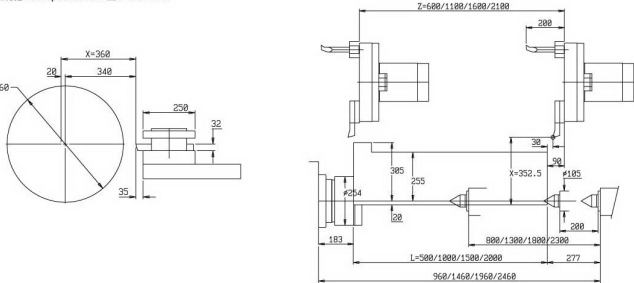
刀具規格 Tool specification: □25 x 25 mm  
孔內刀座 I.D. tool holder: Ø50 mm



EFL-560-H4

加工行程 TURNING TRAVEL

刀具規格 Tool specification: □32 x 32 mm



規格表 SPECIFICATIONS

項目 ITEM	機型 MODEL	單位 UNIT	EFL-560	EFL-510Y
加工能力 Working Capacity	床面旋徑 Swing over bed	mm	Ø560	Ø710
	板架旋徑 (最大加工) Swing over cross slide (Max. turning)	mm	Ø560	Ø510
主軸箱 Headstock	最高心軸距離 Dist. Between centers	mm	600 / 1100 / 1600 / 2100 / 2600 / 3100	600 / 1100 / 1500 / 2000 / 2500 / 3000
	最大加工長度 Max. turning length	mm	500 / 1000 / 1500 / 2000 / 2500 / 3000	500 / 1000 / 1500 / 2000 / 2500 / 3000
	主軸通孔最大加工棒材 (油壓夾頭) Spindle bore Max. turning bar (hyd. chuck)	mm	Ø70 / Ø90 / Ø110 / Ø117 / Ø142	Ø70 / Ø90 / Ø110 / Ø117 / Ø142
	主軸通孔徑 Spindle bore	mm	Ø83 / Ø105 / Ø130 / Ø160	Ø83 / Ø105 / Ø130 / Ø160
行程 Travel	最高主軸轉速 (三段) Max. spindle speed (3-step)	rpm	40-2000 / 40-1500 / 30-1000	40-2000 / 40-1500 / 30-1000
	主軸鼻端 Spindle nose	mm	A2-8 / A2-11	A2-8 / A2-11
	主軸中心高 Center height of spindle	mm	360	360
	主軸C軸分度 Spindle dividing head of C axis	deg	—	0.001
進給 Feed	X軸行程 X axis travel	mm	360	410
	Z軸行程 Z axis travel	mm	600 / 1100 / 1600 / 2100 / 2600 / 3100	600 / 1100 / 1600 / 2100 / 2600 / 3100
	Y軸行程 (45°) Y axis travel (45°)	mm	—	350
	X軸向快速進給 X axis rapid feed	mm/min	—	10000
滾珠導螺桿 Ball lead screw	Z軸向快速進給 Z axis rapid feed	mm/min	16000	10000
	Y軸向快速進給 Y axis rapid feed	mm/min	—	10000
	X/Z軸切屑進給 X, Z axis cutting feed	mm/min	—	0-5000
	Y軸切屑進給 Y axis cutting feed	mm/min	—	0-5000
刀架 Tool holder	X軸 (直徑×節距) X axis (diameter × pitch line)	mm	Ø50×P=12	Ø50×P=16
	Z軸 (直徑×節距) Z axis (diameter × pitch line)	mm	—	Y: Ø32×P=5
	Y軸 Y axis	mm	—	—
尾座 Tailstock	油壓刀塔 Hyd. Turret	mm	V8 / V12 (Opt.)	—
	動力刀塔 Live turret	mm	V8 (VDI 40) (Opt.)	V8 (VDI 40)
	尾座心軸直徑 Quill dia.	mm	—	Ø105
	心軸內孔直徑 Quill I.D. taper	mm	—	MT#5
馬達 Motor	心軸行程 Quill travel	mm	200	200
	主軸馬達 Main spindle motor	kw	15 / 18.5	15 / 18.5
	X軸伺服馬達 X axis servo motor	kw	—	4
	Z軸伺服馬達 Z axis servo motor	kw	—	3
	Y軸伺服馬達 Y axis servo motor	kw	—	Y:3
	洗刷軸馬達 Milling axis motor	kw	—	3.7 / 5.5
	潤滑泵 Lubricating pump	w	—	25
	切削液泵 Coolant pump	BAR	—	3
控制箱 Controller	主軸冷卻泵 Coolant pump for spindle	HP	—	1/2
	油壓箱馬力 Pressure-oil tank horsepower	HP	—	2
控制系統 Control system	電子控制系統 Electronic control system	HP	FANUC / MITSUBISHI / FAGOR / SIEMENS, 發那科 / 三菱 / 發格 / 西門子	—
	控制軸數 Controllable axis		2	3

\*本公司所有機型設計之權利，如有更改或取消規格時不另行通知，但不影響前所售之機械品質。  
\*All specification and designs are subjected to change without notice.

標準附件	特別附件	STANDARD ACCESSORIES	OPTIONAL ACCESSORIES
• 電腦控制器	• 三爪夾頭	• Controller	• 3-jaw chuck
• 主軸頭油壓自動換檔	• 四爪夾頭	• Headstock auto Hyd.	• 4-jaw chuck
• 潤滑系統 × 2	• 三爪油壓夾頭	• Lubricating system	• 3-jaw hyd. chuck
• 冷卻裝置	• 主軸後鼻端+夾頭	• Coolant system	• Rear spindle interface with chuck
• 工作燈	• V8刀塔 (適用EFL-560機型)	• Work lamp	• V8 Hyd. turret (for EFL-560)
• 全罩護金	• 動力刀塔VDI 40/8 (適用EFL-560機型)	• Full splash guard	• Live turret VDI 40/8 (for EFL-560)
• 手動式兩段電壓	• 履帶心軸油壓式	• Manual two steps ta	• Hyd. talstock quill
• 外掛式手箱	• 軸承式跟刀架	• Remote MPG	• Brass follow rest
• 工具及工具箱	• 油壓式中心架	• Tools and tool box	• Bearing type steady rest
• 機型EFL-510Y附	• 油壓式中心架	• Model EFL-510Y with VDI 40/8	• Hydraulic steady rest
• 動力刀塔VDI 40/8	• 齒輪輸送機	• CE/CSA配電	• Chip conveyor
	• 變壓器	• 變壓器	• CE/CSA approval specification
			• Transformer

EVEROX

永峻昌工業有限公司  
EVEROX INDUSTRIAL CO., LTD.

4 1 3 5 6 台中市霧峰區四德路505巷20號  
20, Lane 505, Sihde Rd., Wufong Dist.,  
Taichung City 41356, Taiwan.  
Tel: 886-4-2332-8098 (代表號)  
E-mail: everox@ms57.hinet.net

Fax: 886-4-2332-8099  
http://www.everox.com.tw

AGENT

2015/02/03/Revision: Design 14-0225/01/96

EVEROX

CE ISO 9001



Powerful & Precision CNC Lathes  
強力平床式CNC車床

CNC LATHE MACHINE

••• EFL Series



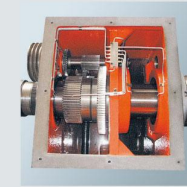
永峻昌工業有限公司  
EVEROX INDUSTRIAL CO., LTD.

# 強力平床式CNC車床 POWERFUL FLAT BED CNC LATHES

EFL Series

EFL-560 / EFL-510Y

Max. turning length 最大加工長度: 500 / 1000 / 1500 / 2000 mm  
Spindle bore 主軸通孔徑: Ø83 / Ø105 / Ø130 / Ø160



Headstock  
主軸箱



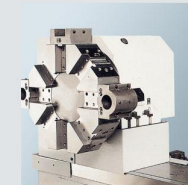
Rear spindle support chuck  
主軸後端支撐夾頭



Spindle headstock oil cooler & Hyd. System  
主軸頭油壓系統+主軸頭油冷裝置



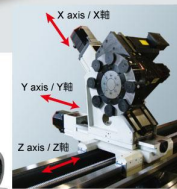
Four way electric turret  
四方電動刀塔



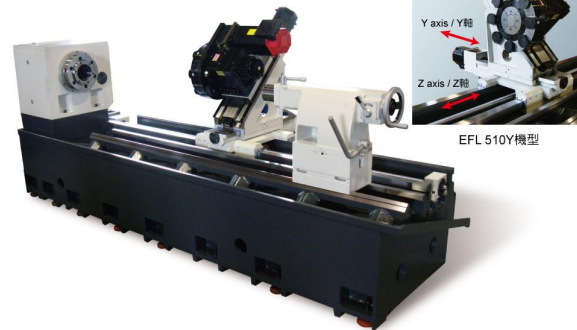
V8 turret  
V8刀塔



VDI 40 Driven tool system  
VDI 40動力刀塔



EFL 510Y 機型

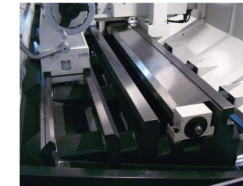


## 特性

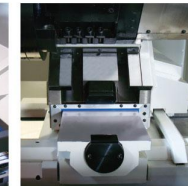
- 床台底座為一體成型，機台結構高剛性，能承受重切削要求，荷重佳。
- 所有鑄件材料採用 FC-30 並於高溫回火處理，不易變形。
- 主軸箱為三點支撐設計，並經力學平衡校正，齒輪模數 3，齒寬大，並有三段變換油壓機，主軸轉速為低檔時，仍可以全馬力輸出，切削力大，適合重切削，並附有主軸油冷機，降低油溫升確保精度。
- 主軸通孔徑為 Ø83mm、Ø105mm、Ø130mm、Ø160mm，可依加工棒材大小來選擇，並可加裝主軸後方安裝夾頭，適合加工長棒材，以確保加工安全性。
- 床身為四軌道，X、Y、Z 軸為方形軌道設計，Z 軸滾珠導螺桿於軌道中間受力平均，精度佳。
- EFL-560 機型可選用四方電動刀塔、V8 或 V12 刀塔，以達加工需求及效率。
- EFL-510Y 機型為選配 VDI40 型動力刀塔，附有 Y 軸(行程 ±50mm)，車銼適合加工的最佳選擇。
- 採用中央給油潤滑系統方式，能自動潤滑滑動面及滾珠導螺桿，強制給油以確保精度及壽命。
- 活動門之視窗採內層為強化玻璃，外層為 PC，以防止工件物飛出，安全性高。

## FEATURES

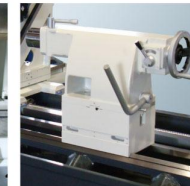
- The bed is designed as box type with rigid structures for ensure heavy duty cutting & excellent heavy loading capability.
- All the main components are made of FC-30 high quality casting and annealing heat treatment for deformation-free.
- Three point support on the spindle and inspected by dynamic balancing, the spindle gear is a module & wide that is very suitable heavy cutting and being with 3 steps hydraulic auto. speed shifting. Especially that can be full power output even as the spindle speed at low gear, large cutting force, and spindle headstock is designed with oil cooler for reduce the temperature of oil ensure accuracy.
- Different spindle bore Ø83mm, Ø105mm, Ø130mm, Ø160mm, It which can be machining big & small workpieces, and it can be fitted with optional rear chuck (Opt.) for long workpiece machining ensure safety.
- Four guide way on the machine & X/Y/Z axis are square design, Z-axis is correctly at the center of bed for uniform loading, ensuring increased accuracy.
- Model of EFL-560 can be fitted H4 four way electric turret, V8 or V12 turret and driven tool system that enable the machine to fully develop its machining performance.
- Model of EFL-510Y can be fitted VDI 40 drive turret with Y-axis (travel ±50mm), which design provides cutting & milling the best choice.
- Adopted central lubricating system which can be lubricated slide way & ball screw the forced lubricating ensure accuracy.
- The visual window of sliding safety door be adopted the reinforced glass at inner layer and outer layer for polycarbonat can be protected the failed workpieces hi-safety.



Four-track design  
(Z axis with square design)  
四軌道設計 (Z 軸方形軌道)



X / Y axis with square design  
X / Y 軸方形軌道



2 Steps manually tailstock  
手動式雙段尾座